

# **BUFFALO MOUNTAIN FLYERS**



**Welcome to the Buffalo Mountain Flyers and thank you for joining our group. We look forward to enjoying many flights together with you.**

Our membership consists of a diverse group of aviators from many states in the region enjoying Hang Gliding and Paragliding in the beautiful skies of Southeastern Oklahoma.

Your membership dues allow us to:

- ❖ Develop and maintain local flying sites and the associated relations with property owners and the general public,
- ❖ Promote pilot safety and education,
- ❖ Support USHPA (US Hang Gliding & Paragliding Assoc.) regulations,
- ❖ Provide a forum for airing hang gliding and paragliding related concerns and issues,
- ❖ Communicate with other hang gliding & paragliding clubs and flying schools in the region, on matters of mutual concern,
- ❖ Provide general information to individuals wishing to learn more about the sports of hang gliding and paragliding.

The Buffalo Mountain Flyers (BMF) provides insurance (through USHPA) and maintains landowner relations at several flying sites in Oklahoma. These include: Buffalo Mountain, Heavener, Little Yancy, and Panorama Vista including PG Point.

Additionally Mount Magazine in Arkansas can be flown as a BMF member at no additional cost through an agreement between BMF and CAMP (Central Arkansas Mountain Pilots). Please review <http://www.centralarkansasmountainpilots.org/> for information.

Please, always fly in a safe manner and set a good example for our sport. Follow any site rules that have been set up to preserve our launches and landing fields. Rules and guidelines have been included in this letter and posted on each site's kiosk. Please take time to review these thoroughly.

*Thank you,*  
Officers, Directors, and Members of BMF

## **Contacts and Information:**

Buffalo Mountain Flyers club website: <http://www.BuffaloMountainFlyers.org>

Find the most current copy of this letter at: <http://www.buffalomountainflyers.org/welcome.pdf>

Club members discussion at: [http://groups.yahoo.com/group/Buffalo\\_Mountain\\_Flyers/](http://groups.yahoo.com/group/Buffalo_Mountain_Flyers/)

Flying discussion at: <http://groups.yahoo.com/group/Region6/>

Area hang gliding & paragliding information: <http://www.OuachitaHangGliding.com>

# BUFFALO MOUNTAIN FLYERS



## General Site Guide

### **ALL PILOTS SHOULD:**

1. Have in their possession a current United States Hang Gliding & Paragliding Association membership card with pilot rating equal or higher than the site requirement. **(Current USHPA membership is mandatory due to insurance requirements).**
2. Only allow USHPA members to act as launch assistants. **(USHPA insurance requirement).**
3. Support the Buffalo Mountain Flyers in keeping our flying sites open and maintained through membership in the BMF club and/or a donation in an amount of your choice.
4. Always comply with all FAA regulations that apply to the operation of your glider.
5. Observe site rating requirements.
6. Not fly in weather conditions outside their personal abilities or gliders' performance capabilities.
7. Be aware that the conditions at our launches change quickly and frequently. Launching and/or landing in windy conditions and/or in mid-day / mid-afternoon strong thermals could easily require a higher rating than the minimum rating required by the site.
8. Visit the landing field before going to launch! Things change and are not always visible from launch. Do not land in fields with very tall grass or nearing hay harvest time.
9. Cut new vegetation growth at launch, before launching, if it might be a safety hazard.
10. Always wear a helmet, have a serviceable parachute, and use a safety hang strap.
11. Fly with a radio. Most local pilots transmit and receive **USHPA frequency 151.925**
12. Observe the right of way rules.
13. Use the buddy system; make sure your partner has landed safely. Avoid flying alone.
14. Land immediately, not launch, if air rescue or airborne fire fighting is taking place.
15. Not fly within 100 feet of any structure or group of spectators, or directly in front of launch when another glider is preparing to launch.
16. Move gliders quickly to the break down area after landing.
17. Take care to comply with any and all specific landowner requirements. Do not drive off of any vehicle road unless you know you have specific permission to do so. Do not cut any trees unless you have clear and explicit permission to do so.
18. Close all gates. There are gates on the way to launch and LZs at many of our sites. To maintain our relationships with property owners it is vital that gates are not left open, even knowing that another pilot is just a few minutes behind.
19. Always put safety first and be courteous to fellow pilots, property owners and visitors.
20. Always pick up trash! Even if it's not yours.
21. Observe notices posted in landing fields or at launches for updated and additional information.

# BUFFALO MOUNTAIN FLYERS



## Site Information

### Buffalo Mountain – H3/P3 (see guidelines below) – Bluff is Advanced w/cliff sign-off!

**Launchable: SSW-SSE** Launch: 34.750000N, 95.140000W

**Vertical: 1100'** LZ: 34.733000N, 95.147100W

Buffalo Mountain is located West of Talihina on Hwy 1. Access is by way of a 4-mile county maintained dirt road (Buffalo Mountain Road accessed next to the Choctaw Indian Hospital). Launch is from a slope groomed for easy launching of hang gliders and paragliders. The original launch (west side) is owned by Mel Hair. He requests that vehicles park outside the bump gate when the ground is muddy. Absolutely no tree cutting is allowed unless Mel is present to give direction. A kiosk is located on launch with site map and additional information. New launches are just to the East of the existing launch. In its current configuration the bluff launch is Advanced rated w/cliff sign-off and *should not be flown in light winds*. The landing field is SSW of launch. Various pilots own much of it. Access is by Tidwell Rd, North off of Hwy 1. When parking, please consider the wind direction and approach path of low flying aircraft. Camping is available on the mountain and the landing field. Be careful with fires. Use pits where they exist.

### Guidelines for novice and intermediate pilots flying at Buffalo Mountain

1. Site Guides may assist lesser rated pilots at selected BMF flying sites, in this case Buffalo Mountain, and only per these guidelines. Guides must be at least H4 or P4 rated, guiding only same sport (HG or PG), and have well rounded experience foot launching from the site.
2. H2/P2 pilots may fly Buffalo Mountain provided their first 5 flights are made with the on-site assistance of their USHPA Certified Instructor or a qualified Site Guide. Before making their first flight at Buffalo, they must have previous foot launch experience and inland mountain flight experience as evidenced by their logbook. (Foot launch under tow is not accepted as foot launch experience.)
3. H3/P3 pilots must have previous inland mountain flight experience as evidenced by their logbook. It is recommended a Site Guide assist with their first visit to Buffalo Mountain.

### Heavener – H2/P2

**Launchable: WSW-SSE** SW Launch: 34.892300N, 94.574000W SSE Launch: 34.883700N, 94.559600W

**Vertical: 800'** SW LZ: 34.890100N, 94.586400W SSE LZ: 34.873000N, 94.555200W

Heavener has two slope launches which are located along the ridge above the Runestone Park, one facing primarily SW and the other SSE. These launches are on private land accessible from Morris Creek Road (North of the park entrance), East onto Benson Lane, then rock/gravel logging road that when dry is passable with a 2-wheel drive vehicle. There is a stream crossing at the end of Benson Lane that requires good ground clearance when crossing. Keep veering to the right at the Y's on good road. The first launch you will come to is the SSE launch on the left. Access through the Runestone Park is not available as it crosses private property for which we have no permission. The landing fields are on private land directly below the launches, the SW side accessible from Morris Creek Road on a private drive opposite East Avenue A, and the SSE side from Hwy 128 on a private drive. Always, please close the gate and drive slow, you're in someone's back yard. A kiosk is located in the SW side LZ with site map and additional information.

# BUFFALO MOUNTAIN FLYERS



## Site Information

### Little Yancy – H2/P2

**Launchable:** SSE-SSW      Launch: 35.016200N, 95.082400W  
**Vertical:** 550'      LZ: 35.006000N, 95.081500W

Little Yancy is a ridge located approximately 5 miles North of the town of Red Oak on Hwy 82, accessible by 2-wheel drive. Launch is a gentle slope located on private land with the owner's home, long time pilot Butch Royston, on site. Butch's front yard is available to camping. Please no open alcoholic beverages and be careful with fires – use the fire pit that is available. To access launch from Hwy 82: Turn left (West) onto NE 173<sup>rd</sup> Rd, go across bridge then go left, then take the first road to the right (NE 173<sup>rd</sup> Rd), go 1.8 miles to Butch's on top of the hill, watch for blue water tower on the left, Butch's driveway will have a green gate on the left. A kiosk is located at launch with site map and additional information. The landing fields are several in front of launch. To access them, instead of turning right on NE 173<sup>rd</sup> Rd to go to launch, go straight on NE 1130<sup>th</sup> Ave 1.8 miles. Look for the main double gate on the right, with a small single gate in the fence that is not locked. The small gate is for our access if the main gate is not open. Keep gate closed.

### Panorama Vista – H3 w/RLF signoff, or P4

**Launchable:** ENE-ESE      Launch: 34.780750N, 94.900800W  
**Vertical:** 1400'      LZ: 34.795500N, 94.887500W

Panorama Vista is located about 4 miles East from the West entrance to Talimena Scenic Drive on Route 1. The launch is a narrow steep earth ramp located below the Panorama Vista scenic overlook on the East side of a guardrail at the end of the sidewalk. The landing field is located NE of launch at no less than a 5:1 glide. Access to the landing field is from Deadman Trail (first right after accessing Deadman Trail from Holson Valley Road). On launch, pilot's vehicles should park parallel off the East side of the roadway, or park further off the road angled along the tree line. Vehicles for non-pilots should be parked in the Panorama Overlook parking area. In the landing area, park along the tree line before the gate. Do not drive into the landing field unless there is an emergency. A new launch "PG Point" is under construction about a mile North of the existing launch Until launch improvements are completed, it should be rated H4/P4 only. Kiosks are located at each launch with site maps and additional information.

### Panorama "PG Point" – H4/P4 \*      \*(until launch improvements are completed)

**Launchable:** ENE-ESE      Launch: 34.792500N, 94.903500W  
**Vertical:** 1300'      LZ: 34.795500N, 94.887500W

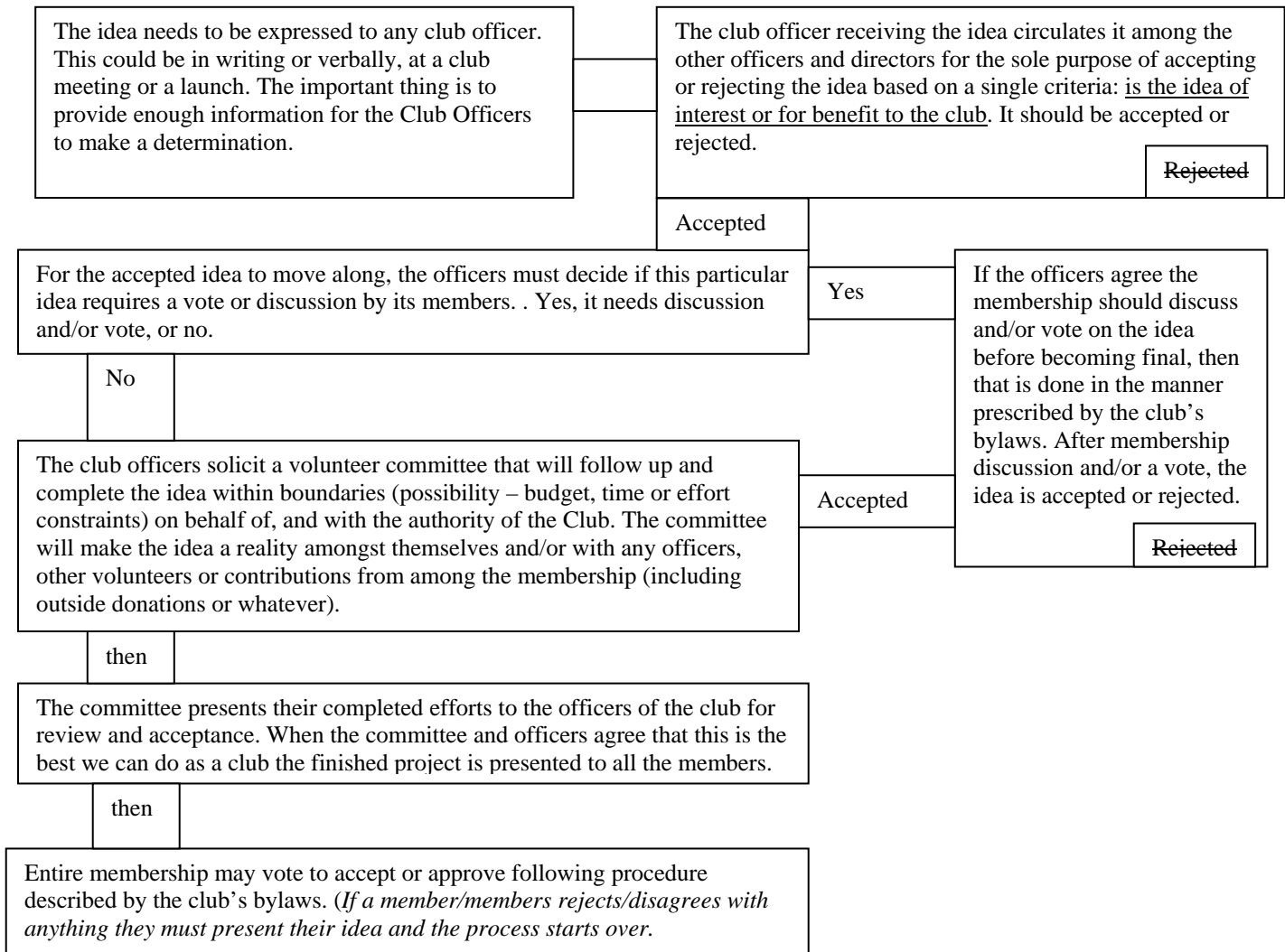
The Panorama "PG Point" launch is located about 3 miles East from the West entrance to Talimena Scenic Drive on Route 1. The launch is a gentle slope transitioning to a steep slope that is being improved for launching both paragliders and hang gliders. This launch site is currently under construction and will undergo many more improvements in the near future. The landing field is located due East of launch, and is the same field that is used for Panorama Vista (see above).

Both of the Panorama launches and the landing field are on Ouachita National Forest land. BMF has permission for hang gliding and paragliding operations through a Special Use Permit with the Forest Service, for which we pay a fee of more than \$1,200 per year.

# BUFFALO MOUNTAIN FLYERS



We want to be a club that serves and represents its membership. Often ideas are expressed but they never become a reality because the process is not generally understood by all. Hopefully the following brief flow-chart will encourage all members to express their ideas:



If at any point in the discussions the officers, committee members, volunteers or members, whichever apply, cannot establish consensus then the idea is dead and the membership should be informed of the results.